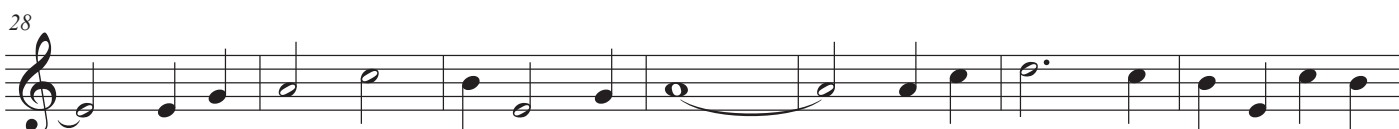


# Mission

Arr. by Casmond Chew



# Mission

Arr. by Casmond Chew

Flute

Piano

Musical notation for the first system, measures 1-5. The Flute part (treble clef) starts with a quarter note G4, followed by quarter notes A4, B4, C5, D5, E5, F5, G5, A5, B5, C6, D6, E6, F6, G6, A6, B6, C7. The Piano part (grand staff) features a bass line of quarter notes G2, A2, B2, C3, D3, E3, F3, G3, A3, B3, C4, D4, E4, F4, G4, A4, B4, C5 and a treble line of chords: G4-B4, A4-C5, B4-D5, C5-E5, D5-F5, E5-G5, D5-F5, C5-E5, B4-D5, A4-C5, G4-B4.

Fl.

Pno.

Musical notation for the second system, measures 6-12. The Flute part (treble clef) starts with a quarter note G4, followed by quarter notes A4, B4, C5, D5, E5, F5, G5, A5, B5, C6, D6, E6, F6, G6, A6, B6, C7. The Piano part (grand staff) features a bass line of quarter notes G2, A2, B2, C3, D3, E3, F3, G3, A3, B3, C4, D4, E4, F4, G4, A4, B4, C5 and a treble line of chords: G4-B4, A4-C5, B4-D5, C5-E5, D5-F5, E5-G5, D5-F5, C5-E5, B4-D5, A4-C5, G4-B4.

Fl.

Pno.

Musical notation for the third system, measures 13-18. The Flute part (treble clef) starts with a quarter note G4, followed by quarter notes A4, B4, C5, D5, E5, F5, G5, A5, B5, C6, D6, E6, F6, G6, A6, B6, C7. The Piano part (grand staff) features a bass line of quarter notes G2, A2, B2, C3, D3, E3, F3, G3, A3, B3, C4, D4, E4, F4, G4, A4, B4, C5 and a treble line of chords: G4-B4, A4-C5, B4-D5, C5-E5, D5-F5, E5-G5, D5-F5, C5-E5, B4-D5, A4-C5, G4-B4.

20

Fl.

Pno.

Detailed description: This system covers measures 20 to 26. The Flute part (Fl.) begins with a melodic line of eighth and quarter notes, ending with a half note. The Piano part (Pno.) features a complex texture with chords and arpeggios in both the right and left hands, including a prominent sixteenth-note arpeggio in the right hand in measure 21.

27

Fl.

Pno.

Detailed description: This system covers measures 27 to 33. The Flute part continues with a melodic line, including a half note and a quarter note. The Piano part maintains its complex accompaniment with chords and arpeggios, featuring a large slur over several chords in the right hand.

34

Fl.

Pno.

Detailed description: This system covers measures 34 to 41. The Flute part has a melodic line with a half note and a quarter note. The Piano part continues with its accompaniment, including a large slur over several chords in the right hand.

42

Fl.

Pno.

Detailed description: This system covers measures 42 to 48, ending with a double bar line. The Flute part concludes with a melodic line ending on a half note. The Piano part concludes with a final chord in the right hand and a long, sustained note in the left hand.